

Country Water Quality Improvement Program

Moorook Water Treatment Plant

What is the Country Water Quality Improvement Program?

Stage 3 of the South Australian Government's Country Water Quality Improvement Program will deliver higher quality filtered drinking water to a number of townships throughout the Murraylands and Riverland regions.

The program began in 1996 with the construction of 10 new water filtration plants. In November 2006, the Government announced the acceleration of Stage 3 of the program, which will see the delivery of filtered River Murray water to 17 communities. This stage includes the construction of 9 water treatment plants and 6 pipelines. One water treatment plant will be constructed at Moorook.

Who will receive filtered water?

Existing SA Water customers in the Moorook township will receive filtered River Murray water from the new plant.

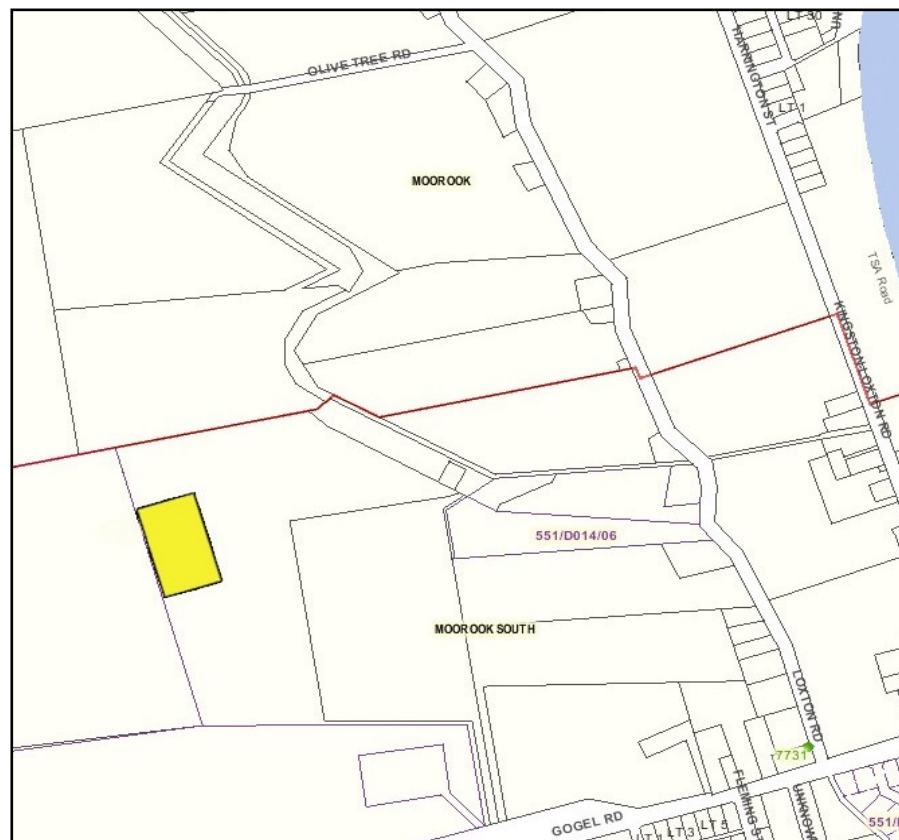
How will filtered water be delivered to Moorook?

The water treatment plant will have the capability to treat and supply 0.7 megalitres (700,000 litres) of water per day to the district.

The water will be delivered through the existing supply network throughout Moorook. Customers will be advised as to when this will begin.

When will construction start and finish?

Construction of the water treatment plant is due to begin in July. Prior to this, preliminary works will occur including the installation of security fencing.



The yellow block on the above map indicates where the Moorook water treatment plant will be located.

Customers in Moorook can expect to receive filtered water in January 2008.

What will the construction activities include?

- Small scale demolition
- Excavation works
- Earthworks
- Pipe works
- Building construction
- Erection of sheds, security fencing and transportable buildings

What are the likely impacts of the works?

Impacts such as noise, vibration and dust may occur as a result of construction activities. These will be monitored as work progresses and measures taken to minimise their impact.

Will there be any traffic restrictions?

There will not be any traffic restrictions resulting from these works.

What access arrangements have been made for the site?

There is an existing access track from Loxton Road to the plant site at Moorook which will be used during construction. Some additional works will be undertaken to improve the condition of the access track.

At what times will the works occur?

Works will occur between the following hours:

- Monday to Friday 7.30am – 4pm
- Saturday 7.30am – 4pm
- Sunday – no works

Will there be any disruptions to the current water supply?

During the construction there will no disruption to SA Water customers' supply. When the new plant is brought on line, customers will be advised of minor disruptions before the filtered water enters their system.

What will the plant comprise of?

The major elements of the plant will be:

- Raw water tank elevated about 3 metres with 12,000 litre capacity
- Treated water tank with 500,000 litre capacity
- Filtration plant – approximately 10 metres by 16 metres in size
- Office, amenities and testing building approximately 3 metres by 8 metres in size
- Chemical storage tanks
- Drying lagoons

What are the likely impacts of the water treatment plant during operation?

Once the plant is fully operational it will have little impact on the community. The noise produced by the plant will be minimal.

How do I find out more information?

For more information about the pipeline phone the SA Water Customer Call Centre on **1800 812 362**.

For information on other SA Water projects log on to www.sawater.com.au.