

Country Water Quality Improvement Program Blanchetown Water Treatment Plant

What is the Country Water Quality Improvement Program?

Stage 3 of the South Australian Government's Country Water Quality Improvement Program will deliver filtered drinking water to a number of townships throughout the Murraylands and Riverland regions.

The program began in 1996 with the construction of 10 new water filtration plants. In November 2006, the Government announced the acceleration of Stage 3 of the program, which will see the delivery of filtered River Murray water to 17 communities. This stage includes the construction of 9 water treatment plants and 6 pipelines. One water treatment plant will be constructed at Blanchetown [see below map].

How will filtered water be delivered to Blanchetown?

The water treatment plant will have the capability to treat and supply 600KL (600,000 litres) of water per day to the district.

The water will be delivered through the existing supply network throughout Blanchetown. Customers will be advised as to when this will begin.

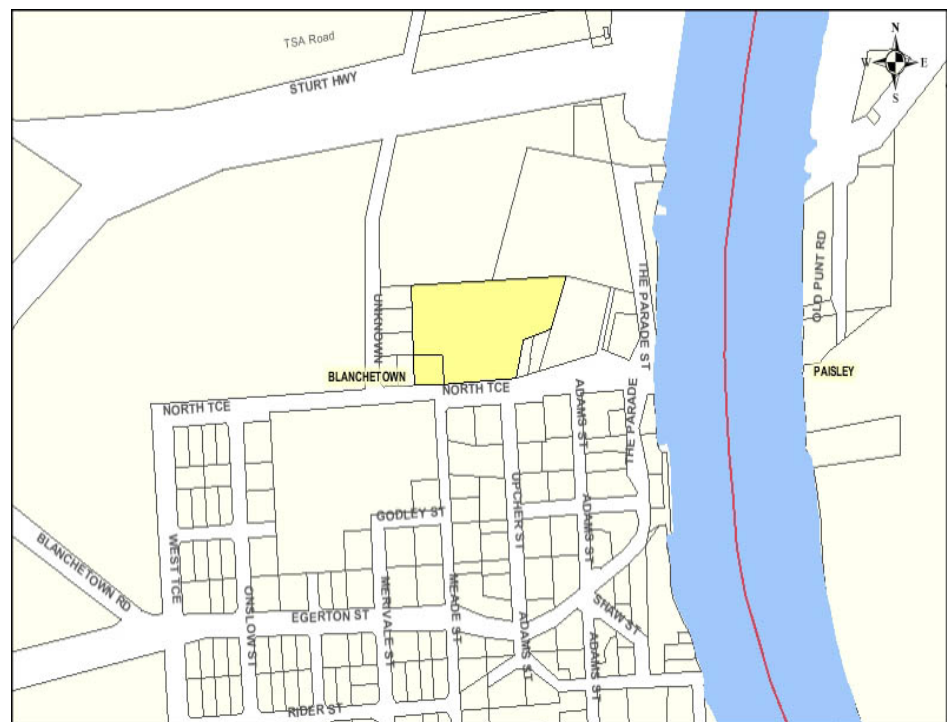
Who will receive filtered water?

Existing SA Water customers in the Blanchetown township will receive filtered River Murray water from the new plant.

When will construction start and finish?

Construction of the water treatment plant is due to begin in August. Prior to this, preliminary works will occur including the installation of security fencing.

Customers in Blanchetown can expect to receive filtered water in January, 2008.



The yellow mark on this map indicates where the new water treatment plant will be located in Blanchetown.

What will the construction activities include?

- Small scale demolition
- Excavation works
- Earthworks
- Pipe works
- Building construction
- Erection of sheds, security fencing and transportable buildings

What are the likely impacts of the works?

Impacts such as noise, vibration and dust may occur as a result of construction activities. These will be monitored as work progresses and measures taken to minimise their impacts.

Will there be any traffic restrictions?

There will not be any traffic restrictions resulting from these works.

What access arrangements have been made for the site?

There is an existing access track from North Terrace to the plant site at Blanchetown which will be used during construction. Some additional works will be undertaken to improve the condition of the access track.

At what times will the works occur?

Works will occur between the following hours:

- Monday to Friday 7.30am – 4pm
- Saturday 7.30am – 4pm
- Sunday – no works

Will there be any disruptions to the current water supply?

During the construction there will no disruption to SA Water customers' supply. When the new plant is brought on line, customers will be advised of minor disruptions before the filtered water enters their system.

What are the likely impacts of the water treatment plant during operation?

Once the plant is fully operational it will have little impact on the community. The noise produced by the plant will be minimal.

What will the plant comprise of?

The major elements of the plant will be:

- Raw water tank elevated about 3 metres with 12,000 litre capacity
- Treated water tank with 125,000 litre capacity
- Filtration plant – approximately 10 metres by 8 metres in size
- Office, amenities and testing building approximately 3 metres by 8 metres in size
- Chemical storage tanks
- Drying lagoons

How do I find out more information?

For more information about the pipeline phone the SA Water Customer Call Centre on **1800 812 362**.

For information on other SA Water projects log on to www.sawater.com.au.