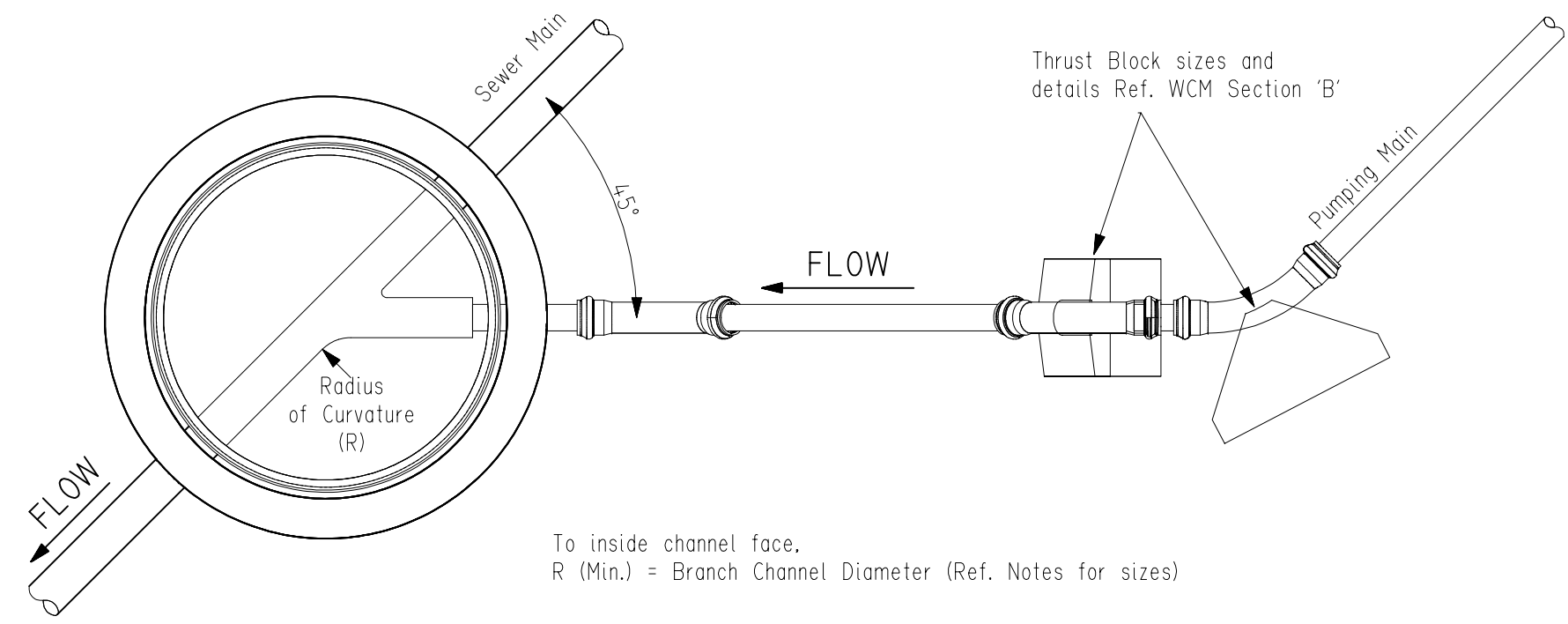
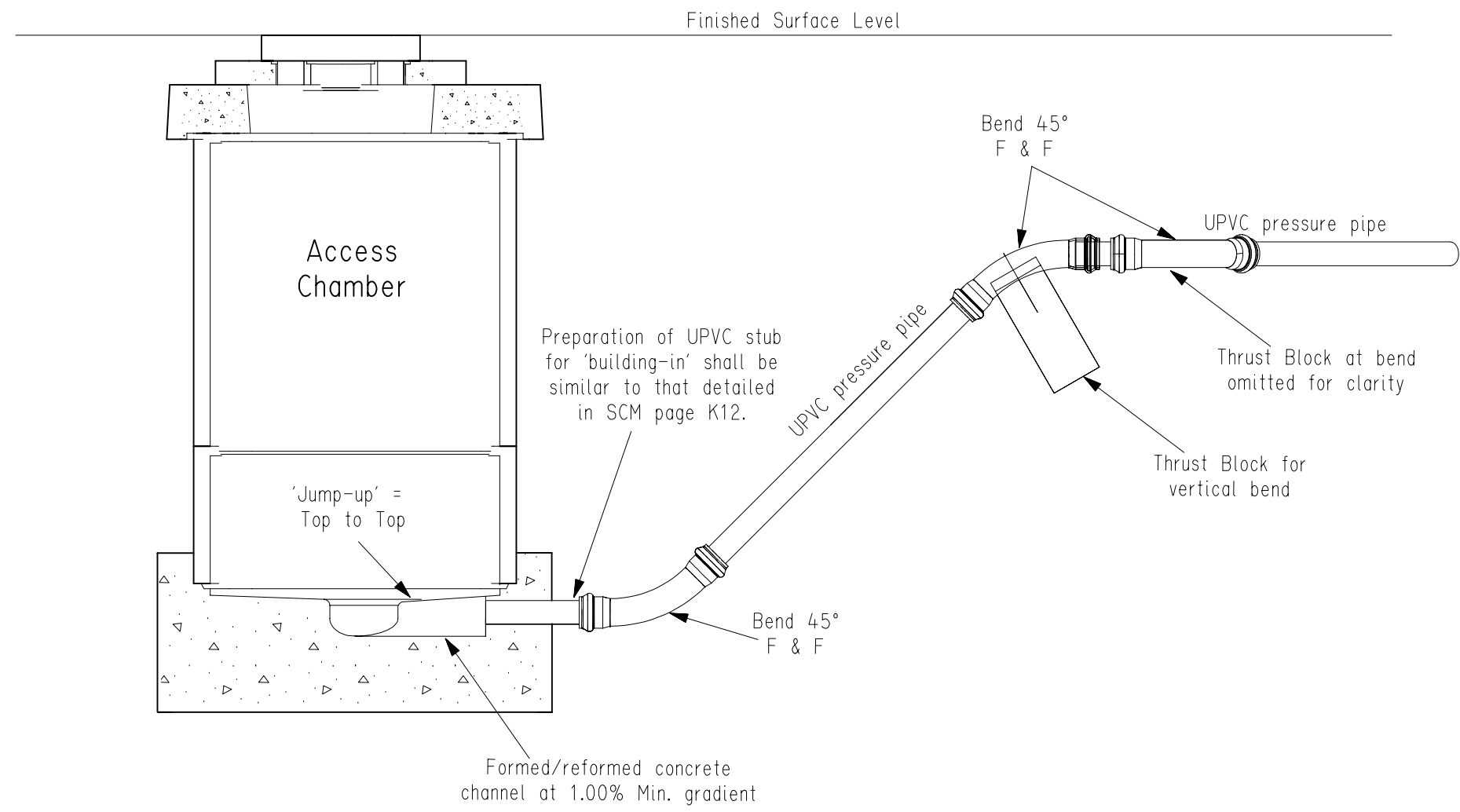


96-0059-02

ISSUED 6 Jan 97



Only "AUTHORISED" items shall be used in the Sewer System.



PUMPING MAIN DISCHARGE RATE

The pumping main discharge rate can not exceed the residual capacity of the recipient sewer.

BRANCH CHANNELS shall be:-

- * 150 Dia for 80 and 100 Dia pumping mains
 - * 225 Dia for 150 Dia pumping mains
- For larger diameter pumping mains, direction shall be sought from the Superintendent's Representative.

CORROSION IN DICL PUMPING MAINS

That portion of pumping main at the discharge end (from the Access Chamber to the 'high point' in the pumping main) which drains empty following each pumping cycle, shall be constructed in UPVC including UPVC fittings.

REFERENCES

Refer to SCM Page M3 for 'Pumping Main Grading and Design Considerations'.
Refer to SCM Section 'L' for details of Access Chamber.

PIPE MATERIALS

- Details on this drawing are applicable to pumping mains using:-
- * approved UPVC plain wall pressure pipes with rubber ring joints
 - * approved DICL pressure pipes with rubber ring joints.

DB 96-0059 Plat 03

Chg	Amendment - 14-6-96	Des	JIS	R.M.Jones Executive Manager 14 / 6 / 96 ENGINEERING GROUP
Drn		Drn	CLS	
Ckd		Exm		
Unit Ldr.		Unit Ldr.		

SOUTH AUSTRALIAN WATER CORPORATION

**SEWER CONSTRUCTION MANUAL PAGE H2
PUMPING MAIN DISCHARGE
INTO ACCESS CHAMBER**

not to scale

96-0059-02

© This drawing is the property of the South Australian Water Corporation and shall not be copied without permission.