

Country Water Quality Improvement Program Palmer to Mannum Country Lands pipeline

What is the Country Water Quality Improvement Program?

Stage 3 of the South Australian Government's Country Water Quality Improvement Program will deliver high quality filtered drinking water to a number of townships throughout the Murraylands and Riverland regions.

The program began in 1996 with the construction of 10 new water filtration plants. In November 2006, the Government announced the acceleration of Stage 3 of the program, which will see the delivery of filtered River Murray water to 17 communities. This stage includes the construction of 9 water treatment plants and 6 pipelines.

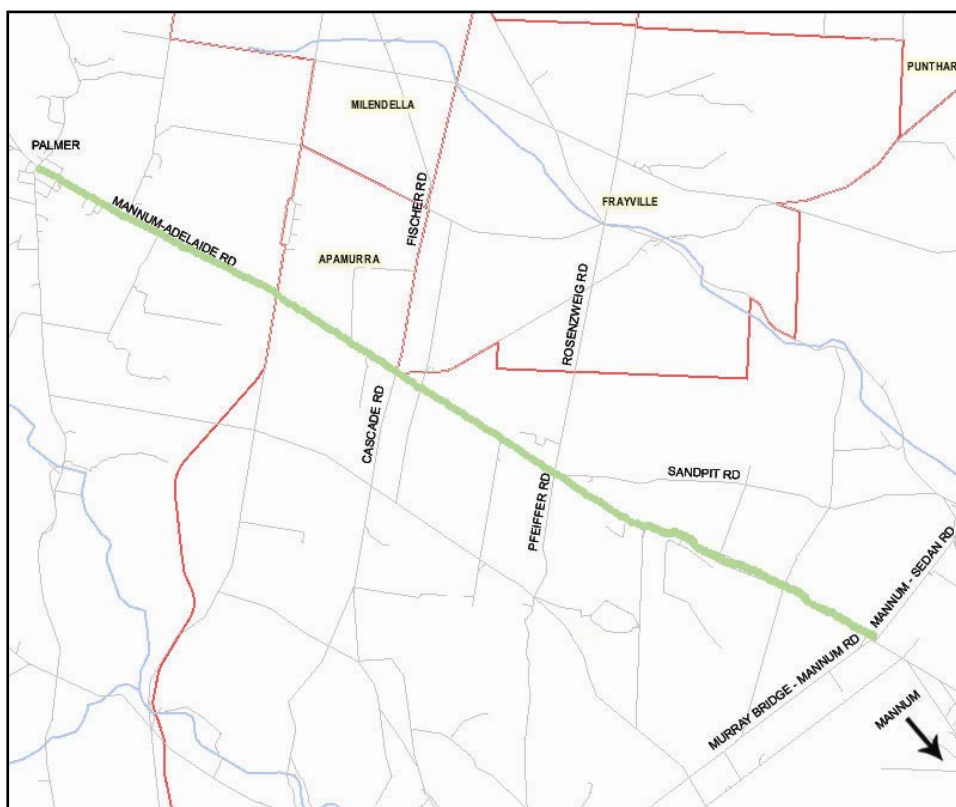
How will filtered water be delivered to Mannum Country Lands?

There are two components to the project to enable filtered water to be delivered to Mannum Country Lands.

A new Water Treatment Plant will be built at Palmer and a pipeline constructed from the plant.

This pipeline will connect to the existing SA Water infrastructure throughout Mannum Country Lands.

This will enable filtered water to be supplied to both Palmer and Mannum Country Lands.



The green line on the above map shows the route of the pipeline.

The pipeline and Water Treatment Plant will both begin construction this month. The pipeline will be 7km long and buried in road reserves, verges and easements along the Mannum - Adelaide Road.

Who will receive filtered water from the new pipeline?

Filtered water will be supplied to existing SA Water customers only in Mannum Country Lands, whose services are located along Western Boundary Road, Pfeiffer Rd/Rosenzweig Road and Mannum - Sedan Road.

When will pipeline construction start and finish?

Construction of the pipeline will start in July 2007 and is expected to be completed in late 2007, ready to deliver filtered water in January 2008.

Equipment will arrive on site prior to the commencement of construction.

At what times will the works occur?

Works will occur between the following hours:

Monday to Friday 7am – 5pm

Saturday 7am – 3pm

Sunday no works

What are the likely impacts of the pipeline works?

Some noise may be generated during the excavation of the trench. This will include truck movements and reversing alarms.

In digging the trench, there may be the need to break rock in some places. Potential impacts will be monitored as work progresses and measures taken to minimise noise and vibration.

Will there be any traffic restrictions?

As the construction occurs, temporary traffic restrictions will apply along the Mannum – Adelaide Road. Access arrangements will be made for local traffic.

Will there be any disruptions to the current water supply?

When the pipeline is connected to the delivery network surrounding Mannum Country Lands and to the new Water Treatment Plant at Palmer some minor interruptions to water supply will occur. Further advice on this will be provided to customers closer to construction completion.

How do I find out more information?

For more information about the pipeline phone the SA Water Customer Call Centre on **1800 812 362**.
For information on other SA Water projects log on to www.sawater.com.au.