

AUTHORISED ITEMS for DUAL WATER SUPPLY SYSTEMS

Recycled Water

For Mains up to DN 375

ALL MINOR ITEMS NOT COVERED IN DETAIL IN THIS CATALOGUE TO BE IN ACCORDANCE WITH APPROPRIATE AUSTRALIAN STANDARD.

Further information on products and materials is available on the WSAA web site

www.wsaa.asn.au

PIPE MATERIALS USED ON RECYCLED WATER MAINS ARE TO BE AS SPECIFIED ON THE ENDORSED DESIGN DRAWINGS.

AUTHORISED ITEMS for DUAL WATER SUPPLY SYSTEMS

Document Update Information

Date	Change Type	Page Number(s)	Details
1 st Dec 2009	Addition	4	Cromford and Poly Pipe added
7 th Sept 2011	Addition	3	Authorised Welders and Fabricators List Amended

AUTHORISED ITEMS for DUAL WATER SUPPLY SYSTEMS

PVC Pressure Pipe for Recycled Water

Where PVC pressure pipe is required for Recycled Water main applications it will be detailed on the approved design drawings. Size range - 100, 150, 200, 250, 300 & 375 mm diameters. Pipe sizes 450, 525 and 600 are also available from the larger manufacturers and may be used with specific approval from SA Water.

Unless specifically approved otherwise by SA Water all PVC pipe installations for recycled water shall meet the following requirements:

- All pipes to be **PURPLE** in colour.
- All pipes are to be Series 2 (CIOD). See relevant Australian Standard.
- Minimum class of pipe to be used is **CLASS 16 unless specific approval to use a lower class has been given by SA Water**
- All pipes and fittings shall be Rubber Ring Jointed

Authorised Manufacturers

Modified PVC (PVC-M)

Iplex Pipelines		
Vinidex		
Tyco Water	Tuf-Flo	(Only available in DN100 to DN375)

Oriented PVC (PVC-O)

Iplex Pipelines -	Apollo Blue	(DN100 to DN300)
Vinidex	Supermain	
Micron Pipelines		(DN100 to DN375 PN16 & PN20 note specific approval is required by SA Water for PN20)

Applicable Australian Standards, WSAA Specifications, etc

- AS/NZS1477 PVC-U Pipes and fittings for pressure applications
- AS 2032 Code of practice for the installation of PVC pipe systems
- AS/NZS 4441(Int) PVC-O Pipes for pressure applications
- AS/NZS 4765(Int) PVC-M Pipes for pressure applications

- WSA PS 209, 210 & 211 PVC Pipe for Water Supply

*For more details about these manufacturers refer to the **Manufacturers** section of this manual.*

AUTHORISED ITEMS for DUAL WATER SUPPLY SYSTEMS

Ductile Iron Cement Lined Pipe (DICL)

Where DICL pipe is required for Recycled Water main applications it will be detailed on the approved design drawings.

When ductile iron pipe is used for Recycled Water it MUST be sleeved with polyethylene sleeving coloured PURPLE.

Ductile iron pipe that is manufactured in accordance with the current AS/NZS 2280-1999 uses a K(n) value to describe the class of pipe eg K9. The pipe uses a rubber ring jointing system and is internally lined with a cement mortar as specified in AS/NZS2280. SA Water has nominated class K9 for all reticulation applications with an operating pressure less than PN16.

A new range of Ductile Iron pipe is being introduced by Tyco Water which is called the Tyton Series 2100 pipe. This pipe has a thinner wall and reduced cement lining, but the external diameter is equivalent to the OD of the current series pipe (K series for DICL and Series 2 for PVC). This pipe has a rating of PN20 or PN 35 and Authorisation has been given for use of PN 35 pipe in SA Water's Infrastructure. **PN 20 pipe is NOT Authorised, but may to be used in limited applications providing specific approval is given by SA Water.**

Size range - 100, 150, 200, 250, 300 & 375mm diameters. Larger sizes to DN750 are also available and may be used on trunk main installations.

Authorised Manufacturer

- Tyco Water K9 Series and Series 2100 PN 35. (See PN 20 note above)

Pipe Sleeving - Purple

- Tyco Water

Restrained Joint Sealing Rings

- Tyco Water Restrained Joint (Tyton Lok)

Underground Warning Tape for Restrained Joints (Tyton Lok)- Pink

- Tyco Water

Applicable Australian Standards, WSAA Specifications, etc

- AS/NZS 2280 Ductile iron pressure pipes and fittings
- AS 3680 Polyethylene sleeving for ductile iron pipelines
- AS 3681 Guidelines for the application of polyethylene sleeving to ductile iron pipelines and fittings
- WSA PS 200 Ductile Iron Pipe for Water Supply

The use of restrained (*Tyton Lok*) joints is authorised and in some instances may be deemed a requirement. Where restrained joints are utilised, a pink marker tape shall be laid on the overlay sand above the pipe, to ensure that when future repairs are done, restrained joints will be installed.

Refer to Water Construction Practice Manual Section B and the manufacturer for allowable application details, minimum restrained lengths and installation details.

*For more details about the manufacturers refer to the **Manufacturers** section of this manual.*

AUTHORISED ITEMS for DUAL WATER SUPPLY SYSTEMS

Steel Cement Lined Pipes (SCL) including Sintacote

SCL pipeline will be directed for use in specific applications including larger diameter pressure mains, dog-legs, pipe specials and crossing creek beds and gullies.

When SCL pipe is used for Recycled Water it MUST be sleeved with polyethylene sleeving coloured PURPLE.

Where there is a requirement to use SCL pipe, special attention must be given to the coating system used and reinstatement of any damage.

Alternative Description

- MSCL pipe

Authorised Manufacturers

- Tyco

Allowable Joint types

- Rubber Ring
- Spherical Slip-in (welded)
- Ball and Socket (welded)
- Plain ended Butt Joint (welded)
- Butt Joint with Collar (welded)
- Flanged (in accordance with AS4087)

Authorised Fabricators of SCL pipework and fittings

- Water Engineering Technologies (SA Water Berri and Crystal Brook workshops)
- Lincoln Engineering
- Ottoway Engineering
- Contract Engineering SA
- Civil Mechanical Services Pty Ltd

Authorised Field Welders for SCL pipework and fittings

- Water Engineering Technologies (SA Water Berri and Crystal Brook workshops)
- Ottoway Engineering
- Lincoln Engineering
- N&A Mobile Welding Services
- Contract Engineering SA
- Civil Mechanical Services Pty Ltd

Applicable Australian Standards, WSAA Specifications, etc

- AS 1579 Arc welded steel pipes and fittings for water and waste water
- AS 1281 Cement mortar lining of steel pipes and fittings
- WSA PS 203 Steel pipe for Water Supply

*For more details about these manufacturers refer to the **Manufacturers** section of this manual.*

AUTHORISED ITEMS for DUAL WATER SUPPLY SYSTEMS

Polyethylene Pipe for Recycled Water

Polyethylene pipe systems are authorised for use, but are predominantly used for directional boring and in country regions where long runs with minimal tappings are required. Where indicated in the WSCM, a detectable underground warning tape shall be laid on top of the embedment material and above the polyethylene pipe to allow the pipe to be located in the future.

Pipe Classification

When ordering specify (in accordance with AS/NZS 4130):

- PE 80 pipe - Type B - PN 16 (for sizes greater than 25mm) or
- PE 100 pipe - PN 16

Colour

Pipe - **Solid PURPLE (preferred) or black with wide PURPLE stripes**

Fittings - Black

Allowable Pipe Sizes

DN 25	- Connections	For DN20 and DN25 Meters
DN 40	- Connections	For DN32 and DN40 Meters
DN63	- Connections	For DN50 Meters
DN63	- Cul de Sacs	Comparable to DN50 Copper
DN125	- Mains	Comparable to DN100 DICL
DN180	- Mains	Comparable to DN150 DICL
DN225	- Mains	Comparable to DN200 DICL

Alternate sizes are available and may be used in special applications with SA Water approval

Authorised Manufacturers

Pipe

- Iplex Pipelines
- Vinidex
- PPI
- Cromford Pipe (formally AFPM)
- Poly Pipe

Applicable Australian Standards, WSAA Specifications, etc

- AS/NZS 4130 Polyethylene pipes for pressure applications
- AS 2033 Installation of polyethylene pipe systems (For minimum cover refer Water Supply Construction Manual)
- WSA PS 207 Polyethylene (PE) Pipe for Water Supply

*For more details about these manufacturers refer to the **Manufacturers** section of this manual.*

AUTHORISED ITEMS for DUAL WATER SUPPLY SYSTEMS

Under Pressure Tapping Service

Under pressure tapping is a system which allows an offtake (\geq DN 80) to be provided from a reticulation or trunk main without the requirement to shut down the main. The service includes the provision of an authorised SS Flanged Offtake and an isolating valve.

The installation is to be carried out in accordance with WSAA “2005 Under Pressure Cut-In Connection of Pressure Pipelines \geq DN 80” which is a supplement to the Water Supply Code WSA 03-2002 Version 2.3. (available free from <https://www.wsaa.asn.au/frameset2.html> - select Bookshop then Public Orders then enter PCØ18 into search box).

Authorised Tapping Service companies require a fully documented Quality Assurance Certification which covers the full under pressure tapping service.

Authorised Under Pressure Tapping Companies

- Complete Tapping Service
- Tapping Systems Australia

Applicable WSAA Standards

- WSA 03 Water Supply Code of Australia

AUTHORISED ITEMS for DUAL WATER SUPPLY SYSTEMS

SA Water Product Description

Ductile Iron Fittings
(FBE Coated)


Alternative Description

Nom. Size DN	Products	NIBF (Iplex)	Tyco Water	Dobbie Dico	Mallet Foundry	Vinidex
100	All DICL Fittings listed in SA Water's WSM #	*	*	*	*	*
150		*	*	*	*	*
200		*	*	*	*	
250		*	*	*	*	
300		*	*	*	*	
375		*	*		*	

Authorised Products List - Mains Section

Requirements

Standard FBE coated water fittings as authorised for potable water are authorised for use in Recycled Water systems.

Fittings shall be manufactured in accordance with AS2280.

Blue or Black coloured fitting are acceptable for use in Recycled Water systems.

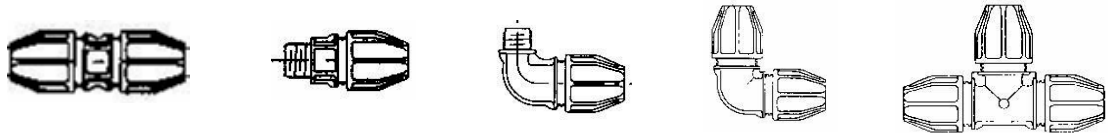
Applicable Australian Standards, WSAA Specifications, etc

- AS/NZS2280 Ductile iron pressure pipes and fittings
- WSA PS 201 Ductile Iron Fittings for Water Supply

For more details about these manufacturers refer to the **Manufacturers** section of this manual.

AUTHORISED ITEMS for DUAL WATER SUPPLY SYSTEMS

SA Water Product Description

Polyethylene Fittings
Mechanical Couplings


PE Couplings



Tita Coupling (Brass)

 Alternative Description
 PE Joiners

Nom. Size DN	Authorised Products	George Fischer	Magnum (Iplex)	Philmac	Plasson	STP (Fusion Plast Australia)	Tita Coupling (Brass)
25		*	*	*	*	*	*
40	All PE Products listed in SA Water's WSM #	*	*	*	*	*	*
50		*	*	*	*	*	*
73		*	*	*	*	*	*
90		*	*	*	*	*	*
110		*	*	*	*	*	*

Authorised Products List - Mains and Connection Sections

Requirements

Fittings shall be produced in accordance with the appropriate Australian Standards

Standard black potable (drinking) water fittings are acceptable for use in Recycled Water systems.

Applicable Australian Standards, WSAA Specifications, etc

- AS/NZS 4129 Fittings for polyethylene pipe for pressure applications
- WSA PS 208 Polyethylene (PE) Pressure Fittings for Water Supply-Moulded

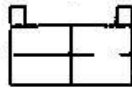
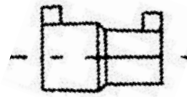
 For more details about these manufacturers refer to the **Manufacturers** section of this manual.

AUTHORISED ITEMS for DUAL WATER SUPPLY SYSTEMS

SA Water Product Description

Polyethylene Fittings

Electrofusion Couplings


Standard

Reducing
Also Available

- Tees
- 45 and 90 Bends
- Stub Flanges

Alternative Description

Nom. Size DN	Products	George Fischer	Fusion Plast Australia	Philmac (Durafuse)	Plasson	Rollma- plast
25		*	*	*	*	*
40		*	*	*	*	*
50		*	*	*	*	*
73	All PE	*	*	*	*	*
90	Products	*	*	*	*	*
110	listed in	*	*	*	*	*
140	SA Water's	*	*	*	*	*
180	WSM #	*	*	*	*	*
225		*	*	*	*	*
280		*	*	*	*	*
315		*	*	*	*	*

Authorised Products List - Mains & Connection Section

Requirements

SA Water will only accept Electrofusion joints where the ends of the pipes to be inserted into the coupling have been shaved back to virgin material using a commercially available mechanical scraper, immediately prior to making the joint.

Fittings shall be produced in accordance with the appropriate Australian Standards

Standard black potable (drinking) water fittings are acceptable for use in Recycled Water systems.

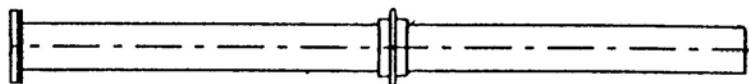
Applicable Australian Standards, WSAA Specifications, etc

- AS/NZS 4129 Fittings for polyethylene pipe for pressure applications
- WSA PS 208 Polyethylene (PE) Pressure Fittings for Water Supply-Moulded

*For more details about these manufacturers refer to the **Manufacturers** section of this manual.*

AUTHORISED ITEMS for DUAL WATER SUPPLY SYSTEMS

SA Water Product Description

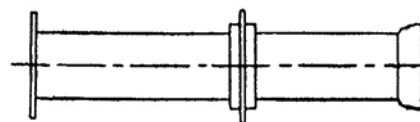
***Extension Pipe - Flange/Spigot
 With Puddle Flange***


Note : Pipework is Ductile Iron.

Nom. Size DN x Length	SA Water Stock No.	NIBF (Iplex)	Tyco Water
100 x 2700	4730-5111	*	*
150 x 2700	4730-5112	*	*
200 x 2700	4730-5113	*	*
250 x 3100	-----	*	*
300 x 3100	-----	*	*
375 x 3100	-----	*	*

Highlighted items are included in SA Water's Fittings Contract PC1112

SA Water Product Description

***Extension Pipe - Flange/Socket
 With Puddle Flange***

Alternative Description

Thrust Connector

Note : Pipework is Ductile Iron.

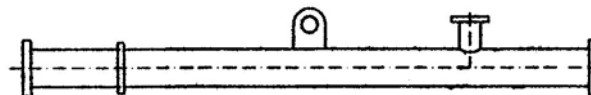
 Standard Product is cast DI with FBE coating, alternatively they can be manufactured from DICL pipe where
 L = Length to suit application - Minimum length shall be 450 mm

Nom. Size DN x Length	SA Water Stock No.	NIBF (Iplex)	Tyco Water
100 - 750 x L	-----	*	*
100 x 450 Casting	4730-5115	100 x 600 long	*
150 x 450 Casting	4730-5116	*150 x 600 long	*
200 x 450 Casting	4730-5117	*150 x 600 long	*
250 x 600 Casting	-----	*	
300 x 915 Casting	-----	*	
375-600 x 900 Casting	-----	*	

AUTHORISED ITEMS for DUAL WATER SUPPLY SYSTEMS

SA Water Product Description

***Extension Pipe - Flange/Flange
 With Thrust Ring & 80mm
 Flanged Fire Plug Offtake***



Note : Ottoway Engineering Pipework is Mild Steel Cement Lined (MSCL)
 Fusion Plast pipework is Butt Welded PE

Nom. Size DN	SA Water Stock No.	Ottoway Engineering	Fusion Plast
100	4730-4976	*	*
150	4730-4977	*	*
200	4730-5099	*	
250	-----	*	
300	-----	*	
375	-----	*	

Can also be assembled using flanged DICL fittings

Requirements

SA Water will only accept Extension pipes authorised by SA Water Infrastructure Standards Unit and specifically manufactured for water industry applications.

*For more details about these manufacturers refer to the **Manufacturers** section of this manual.*

AUTHORISED ITEMS for DUAL WATER SUPPLY SYSTEMS

SA Water Product Description

Multi Fit Couplings
(FBE Coated Body and End Clips)


Type	Authorised	AVK	Tyco Water
Straight	All couplings listed in SA Water's WSM #	*	*
Stepped		*	*
Adaptor Flange		*	*

Authorised Products List - Mains Section

Requirements

SA Water will only accept couplings which are FBE coated in accordance with AS/NZS 4158-1 and all other metal components are manufactured from Grade 316 Stainless Steel.

Applicable Australian Standards, WSAA Specifications, etc

- AS/NZS4158-1 Polymeric coatings on valves and fittings for water industry purposes – Thermal bonded
- WSA PS 311 Mechanical Couplings, Unrestrained

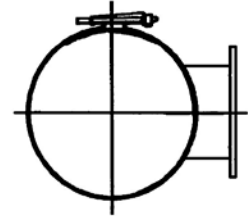
*For more details about these manufacturers refer to the **Manufacturers** section of this manual.*

AUTHORISED ITEMS for DUAL WATER SUPPLY SYSTEMS

SA Water Product Description

Flanged Offtakes

Alternative Description

Watgas Flanged Collar
***Flanged Offtakes 316 Stainless Steel**

Note:

- **Size on Size drilling not permitted**
- **Only authorised Under Pressure Tapping Service Companies are to install these fittings**

Size DN x dn (Br)	SA Water Stock No.	R.M.C. #	Tyco Water (Wang)
100 x 100	4730-4829	100 x 80 plus 80 - 100 Fl.- Soc. Taper	
150 x 80	4730-4830	*	*
150 x 100	4730-4715	*	*
200 x 100	4730-4831	*	*
200 x 150	4730-4832		*
250 x 100	-----	*	*
250 x 150	-----		*
300 x 100	-----	*	*
300 x 150	-----		*
300 x 200	-----		*
300 x 250	-----		*
375 x 100			*
375 x 150			*
375 x 200			*
375 x 250			*
375 x 300			*

Applicable Australian Standards, WSAA Specifications, etc

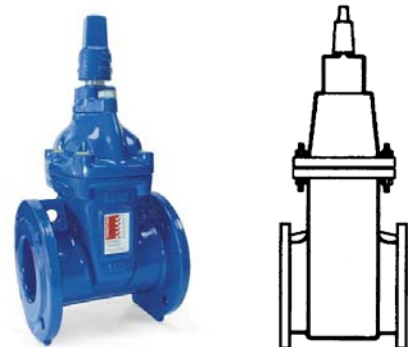
- AS 4181 Stainless steel clamps for waterworks purposes
- WSA PS 313 Clamps Off-Take for Under pressure Connections

*For more details about these manufacturers refer to the **Manufacturers** section of this manual.*

AUTHORISED ITEMS for DUAL WATER SUPPLY SYSTEMS

SA Water Product Description

**Valve - Resilient Seat
 Gate Valve Double Flanged
 (Manually Operated Valve to AS2638 Part 2
 Square drive and clockwise closing)**


For Buried Applications

Alternative Description

Sluice Valve - Flanged
Stop Valve - Flanged

Nom. Size DN (Pressure)	SA Water Stock No. (1.6 MPa)	AVK (Iplex) Series 57/40 (1.6 MPa)	Tyco (1.6 MPa)	AVK (Iplex) PN25 (2.5 MPa) Series 57/80 Table "F" Flanges Interim Authorisation
50 (1.6 MPa)		*		
65 (1.6 MPa)		*		
80 (1.6 MPa)		*	*	*
100 (1.6 MPa)		*	*	*
150 (1.6 MPa)		*	*	*
200 (1.6 MPa)		*	*	*
225 (1.6 MPa)		*	*	*
250 (1.6 MPa)		*	*	*
300 (1.6 MPa)		*	*	*

Requirements

SA Water requires all valves used for Recycled Water applications to have the spindle cap and valve dome to be coloured **PURPLE** and have a **RED** dot on the top of the spindle cap to signify that the valve is **CLOCKWISE** closing.

Applicable Australian Standards, WSAA Specifications, etc

- AS 2638-2 Gate Valves for Water works purposes
- WSA PS 260 Gate Valves – Resilient Seated

For more details about these manufacturers refer to the **Manufacturers** section of this manual.

AUTHORISED ITEMS for DUAL WATER SUPPLY SYSTEMS

SA Water Product Description

***Valve - Resilient Seat Gate Valve
with PE Pipe Connection Ends
(Pressure Rating 1.6 MPa
Square drive and clockwise closing)***



Series 36/80



Series 01/70

For Buried Applications

Nom. PE Pipe Size (Equivalent Valve size)	SA Water Stock No.	AVK (Iplex)
--	-----------------------	----------------

SERIES 36/80 (Fusion or Butt welded applications)

90		★
110		★
125 (DN100 equiv)		★
180 (DN150 equiv)		★
250 (DN200 equiv)		★
315 (DN250 equiv)		★

SERIES 01/70 (Tensile Resistant PE ends – Restrained Joint)

90		★
110		★
125 (DN100 equiv)		★
180 (DN150 equiv)		★
250 (DN200 equiv)		★
315 (DN250 equiv)		★

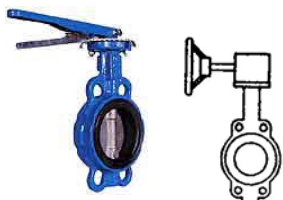
Applicable Australian Standards, WSAA Specifications, etc

- AS 2638-2 Gate Valves for Water works purposes (valve body only)
- WSA PS 260 Gate Valves – Resilient Seated

*For more details about these manufacturers refer to the **Manufacturers** section of this manual.*

AUTHORISED ITEMS for DUAL WATER SUPPLY SYSTEMS

SA Water Product Description

Valve - Butterfly
Pressure Rating 1.6 MPa

Wafer

Lugged

Double Flanged

 Note : **Not for buried applications**

Type	Authorised	AVK (Iplex)	Keystone Tyco	Ebro	Turnflo
Wafer	Full range of Butterfly valves listed in SA Water's WSM #	*	*	*	*
Lugged		*	*		
Double Flanged		*	*	*	

Authorised Products List - Mains Section

Note

Because these valves are not used in buried applications and therefore the adjacent pipework will identify the main as being recycled they do not need to be coloured purple.

Applicable Australian Standards, WSAA Specifications, etc

- AS 4795 Butterfly valves for waterworks purposes
- WSA PS 263 Butterfly Valves

For more details about these manufacturers refer to the **Manufacturers** section of this manual.

AUTHORISED ITEMS for DUAL WATER SUPPLY SYSTEMS

SA Water Product Description

Valve - Non Return
(Pressure Rating 1.6 MPa)
** Not for buried applications*



Wafer



Swing Check

Type	Authorised	AVK (Iplex)	Tyco Water	Crane (Iplex)	Keystone Tyco (Keystone 86)
Wafer	Full range of Non-return valves listed in SA Water's WSCM #			*	*
Swing Check		*	*		

Authorised Products List - Mains Section

Applicable Australian Standards, WSAA Specifications, etc

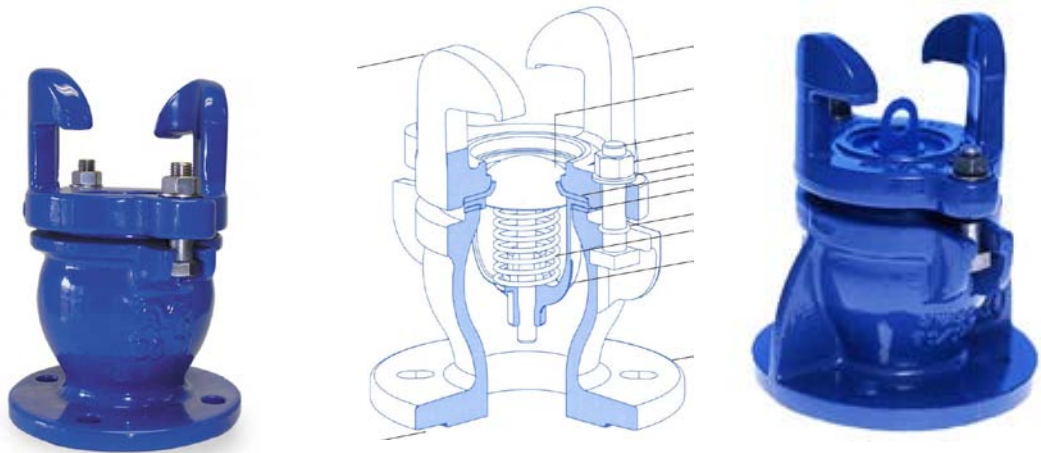
- AS 4794 Non-return valves - Swing check and tilting disc
- WSA PS 264 Non-Return (Reflux) Valves

*For more details about these manufacturers refer to the **Manufacturers** section of this manual.*

AUTHORISED ITEMS for DUAL WATER SUPPLY SYSTEMS

SA Water Product Description

Air Release Hydrant Hydrant - Below Ground



Alternative Description

Swash Spring Hydrant

Nom. Size DN	SA Water Stock No.	AVK (Iplex)	Tyco Water
80mm (1.6 MPa)		★	★

Requirements

This hydrant requires a special standpipe to allow it to be operated

SA Water requires all hydrants used for Recycled Water applications to have the top plate (includes lock down lugs) to be coloured **PURPLE**.

Applicable Australian Standards, WSAA Specifications, etc

- AS 3952 Spring Valve Hydrants
- WSA PS 267 Hydrants (Spring) for Water Supply

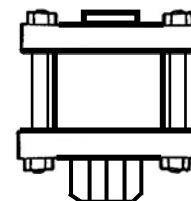
*For more details about these manufacturers refer to the **Manufacturers** section of this manual.*

AUTHORISED ITEMS for DUAL WATER SUPPLY SYSTEMS

SA Water Product Description

Valve - Air Release

(Pressure Rating 1.6 and 2.5 MPa)



Nom. Size DN (Pressure)	Stock Number	AVK (Iplex) (Series 851) 1.6 MPa #	AVK (Iplex) (Series 851) 2.5 MPa #	Ventomat (RBX Series)	
25 (Screwed BSP)	4820-3154	★		★	
50 (Screwed BSP)	4820-0146	★	★	★	
80	4820-3155	★	★	★	
100	4820-3156	★	★	★	
150	4820-3157	★	★	★	

Highlighted items are included in SA Water's Valve Contract PC1111
 # Flanges to AS 4087 and coated to AS 4158

Note

Because these valves are not used in buried applications and therefore the adjacent pipework will identify the main as being recycled they do not need to be coloured purple.

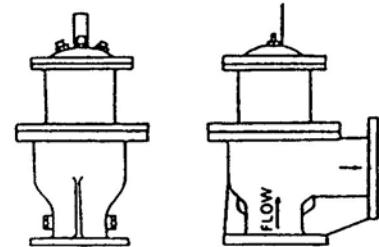
Applicable Australian Standards, WSAA Specifications, etc

- WSA 106 Air Valves
- WSA PS 265 Air Valves for Water Supply

*For more details about these manufacturers refer to the **Manufacturers** section of this manual.*

AUTHORISED ITEMS for DUAL WATER SUPPLY SYSTEMS

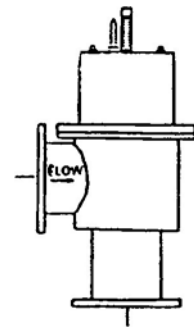
SA Water Product Description ***Valve - Hydraulic Operated Control
(Double Flanged - Stainless Steel)***



Alternative Description
HOCV

Size DN Pipe	SA Water Stock No.	AVK
100 (1.4 MPa)	4820-0739	*
200 (1.4 MPa)	4820-0740	*

SA Water Product Description ***Valve - Hydraulic Operated Sleeve
(Double Flanged - Stainless Steel)***



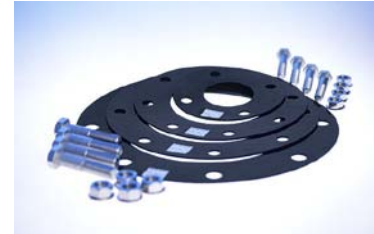
Alternative Description
HOSV

Size DN Pipe	AVK
200 (1.4 MPa)	*
200 (1.7 MPa)	*
250 (1.4 MPa)	*
250 (1.7 MPa)	*
300 (1.4 MPa)	*
300 (1.7 MPa)	*

AUTHORISED ITEMS for DUAL WATER SUPPLY SYSTEMS

SA Water Product Description

Jointing Kits with Stainless Steel, High Tensile or Galvanised Bolts


 Alternative Description
Gasket Set

Includes EPDM Gasket plus Bolts, Nuts and Washers to suit

Size DN Pipe	316 Stainless	Galvanised	High Tensile	Iplex	Keystone Tyco
	Steel Bolts	Bolts	Bolts		
	SA Water Stock No.	SA Water Stock No.	SA Water Stock No		

To suit PN16 (1.6MPa) Flanges

50	5330-2024	5330-2001		*	
65	5330-2025	5330-2002		*	
80	5330-2026	5330-2003		*	*
100	5330-2027	5330-2004		*	*
125	5330-2028	5330-2005		*	
150	5330-2029	5330-2006		*	*
200	5330-2030	5330-2007		*	*
225	5330-2031	5330-2008		*	*
250	5330-2032	5330-2009		*	*
300	5330-2033	5330-2010		*	*
350	5330-2034	5330-2011		*	*
375	5330-2035	5330-2012		*	*
400	5330-2036	5330-2013		*	*
450	5330-2037	5330-2014		*	*
500	5330-2038	5330-2015		*	*
525	5330-2039	5330-2016		*	
600	5330-2040	5330-2017		*	*
700	5330-2041	5330-2018		*	*
750	5330-2042	5330-2019			
800	5330-2043	5330-2020			
900	5330-2044	5330-2021			
1000	5330-2045	5330-2022			
1200	5330-2046	5330-2023			

To suit PN35 (3.5MPa) Flanges

80	5330-2061	5330-2048	5330-2074	*	*
100	5330-2062	5330-2049	5330-2075	*	*
125	5330-2063	5330-2050		*	
150	5330-2064	5330-2051	5330-2076	*	*
200	5330-2065	5330-2052	5330-2077	*	*
225	5330-2066	5330-253	5330-2078	*	*
250	5330-2067	5330-2054	5330-2079	*	*

AUTHORISED ITEMS for DUAL WATER SUPPLY SYSTEMS
Joining Kits (continued)

Size DN Pipe	316 Stainless	Galvanised	High Tensile	Iplex	Keystone Tyco
	Steel Bolts	Bolts	Bolts		
	SA Water Stock No.	SA Water Stock No.	SA Water Stock No.		
<i>To suit PN35 (3.5MPa) Flanges (Continued)</i>					
300	5330-2068	5330-2055	5330-2080	*	*
375	5330-2069	5330-2056	5330-2081	*	*
400	5330-2070	5330-2057		*	*
450	5330-2071	5330-2058	5330-2082	*	*
500	5330-2072	5330-2059	5330-2083	*	*
600	5330-2073	5330-2060	5330-2084	*	

Wafer Butterfly Valves

50	5330-210	5530-2085		*	*
65	5330-210	5530-2086		*	*
80	5330-2109	5530-2087		*	*
100	5330-2110	5530-2088		*	*
125	5330-2111	5530-2089		*	*
150	5330-2112	5530-2090		*	*
200	5330-2113	5530-2091		*	*
250	5330-2114	5530-2092		*	*
300	5330-2115	5530-2093		*	*
350	5330-2116	5530-2094		*	*
375	5330-2117	5530-2095		*	*
400	5330-2118	5530-2096		*	*
450	5330-2119	5530-2097		*	*
500	5330-2120	5530-2098		*	*
525	5330-2121	5530-2099		*	*
600	5330-2122	5530-2100		*	*
700	5330-2123	5530-2101			
750	5330-2124	5530-2102			
800	5330-2125	5530-2103			
900	5330-2126	5530-2104			
1000	5330-2127	5530-2105			
1200	5330-2128	5530-2106			

Lugged Butterfly Valves

50	5530-2143	5530-2129		*	
65	5530-2144	5530-2130		*	
80	5530-2145	5530-2131		*	
100	5530-2146	5530-2132		*	
125	5530-2147	5530-2133		*	
150	5530-2148	5530-2134		*	
200	5530-2149	5530-2135		*	
250	5530-2150	5530-2136		*	
300	5530-2151	5530-2137		*	
350	5530-2152	5530-2138		*	
400	5530-2153	5530-2139		*	
450	5530-2154	5530-2140		*	
500	5530-2155	5530-2141		*	
600	5530-2156	5530-2142		*	

Highlighted items are included in SA Water's Valve Contract PC1111

AUTHORISED ITEMS for DUAL WATER SUPPLY SYSTEMS

SA Water Product Description

Valve - Spindle Extension

Alternative Description

Spindle Extension Valve


Extension Nominal Length (mm)	SA Water Stock No.	Iplex	Hadaway	Tyco
150		*	*	*
300		*	*	*
450		*	*	*
600		*	*	*
750		*	*	*
900		*	*	*
1050		*	*	*
1200		*	*	*

Spindle (or at least the spindle cap equivalent) to be coated or painted **PURPLE** with a **RED** dot on top of spindle cap to signify Clockwise closing.

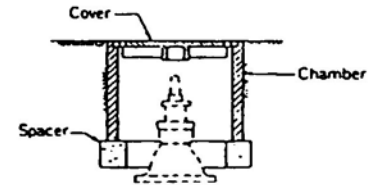
Applicable Australian Standards, WSAA Specifications, etc

- AS 2638 Gate Valves for Water works purposes
- WSA PS 262 Extension Spindles for Gate Valves

*For more details about these manufacturers refer to the **Manufacturers** section of this manual.*

AUTHORISED ITEMS for DUAL WATER SUPPLY SYSTEMS

SA Water Product Description

Street Box Assembly - Lightweight

 Alternative Description
Poly Street Box

Item	SA Water Stock No.	BIA (Bianco PCP)	Tyco Water	Vinidex	WASA (Cooke Pre Cast)
Cover (One Piece Lid)	5680-0312	*	*		
Polyethylene Chamber #	5680-0379			*	
Spacer					
600 dia x 75 thick	5680-0072	*			*
600 dia x 140 thick	5680-0049	*			*

This Chamber is **NOT** designed for road use

The frames for this product are the same as for Potable Water. The covers are the same design, but have different markings and are coated/painted **PURPLE**.

Cover to be marked “**RECYCLED WATER**” or “**RECLAIMED WATER**”

+Cover to be coated or painted **PURPLE**

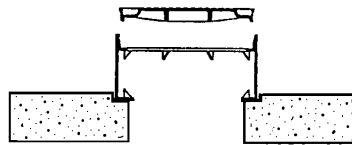
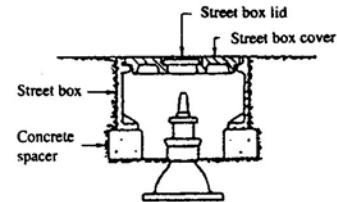
Applicable Australian Standards, WSAA Specifications, etc

- AS3996 Access covers and grates
- WSA PS 290 Access Covers for Water Supply and Sewerage to AS 3996

*For more details about these manufacturers refer to the **Manufacturers** section of this manual.*

AUTHORISED ITEMS for DUAL WATER SUPPLY SYSTEMS

SA Water Product Description

Street Box Assembly - Heavy Duty

Type 1 - Slab type (Preferred)

Type 2 - Circular support

Alternative Description

Two Piece Lid Street Box

Item	SA Water Stock No.	BIA (Bianco PC P)	Tyco Water	WASA (Cooke Pre Cast)	Webforge
Cover (Two Piece Lid)	5680-0060	*	*	*	*
Lid-Valve Access	5680-0065	*	*	*	*
Street Box - Cast (Full Height)	5680-0061	*	*	*	*
Street Box - Cast (Half Height)	5680-0230	*		*	*
<i>Type 1 Support - Slab Type (Preferred Option)</i>					
Concrete slab 1200 x 800 x 125 thick	5680-0080	*		*	
800 x 800 x 150 thick	5680-0051			*	
<i>Type 2 Support - Circular Ring</i>					
600 dia x 75 thick	5680-0072	*		*	
600 dia x 140 thick	5680-0049	*		*	

The frames for this product are the same as for Potable Water. The covers are the same design, but have different markings and are coated/painted **PURPLE**.

Cover to be marked “**RECYCLED WATER**” or “**RECLAIMED WATER**”

Cover to be coated or painted **PURPLE**

Applicable Australian Standards, WSAA Specifications, etc

- AS3996 Access Covers and Grates
- WSA PS 290 Access Covers for Water Supply and Sewerage to AS 3996

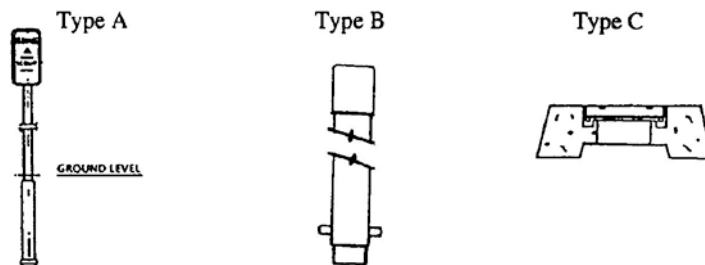
For more details about these manufacturers refer to the **Manufacturers** section of this manual.

AUTHORISED ITEMS for DUAL WATER SUPPLY SYSTEMS

SA Water Product Description

Signs and Markers

Alternative Description



Item Description	Type	SA Water Stock No.	Peninsular Castings#	Ottoway Engineering
Recycled Water Scour Sign with 32mm Galv. Post	A		★	★
Recycled Water Stop Valve Sign with 32mm Galv. Post	A		★	★
Recycled Water Scour Sign only	A		★	
Recycled Water Stop Valve only	A		★	
Sign, Electrical Cable - Thru' Arrow	C		★	
Sign, Electrical Cable - L Shaped Arrow	C		★	
Sign, Electrical Cable - Single Arrow	C		★	

Can manufacture signs with alternate wording as required eg Stop Valve

Item Description	Type	SA Water Stock No.	Autotherm
Post - Cathodic Protection Indicator	B		★

AUTHORISED ITEMS for DUAL WATER SUPPLY SYSTEMS

SA Water Product Description

Tape Underground Warning

NOTE : Non Detectable tape to be placed on overlay sand above pipe.

 Detectable tape to be placed 100 - 150mm below finished ground level above pipe - **PURPLE** in colour

Alternative Description

Item Description	SA Water Stock No.	Tyco Water
'WARNING : RESTRAINED PIPELINE TYTON LOK FITTINGS' - Non Detectable		★
'CAUTION RECYCLED WATER MAIN WATER MAIN BELOW' - Detectable	PURPLE Tape in accordance with AS 2648.1 and WSA PS 318	

Applicable Australian Standards, WSAA Specifications, etc

- AS/NZS 2648.1 Underground marking tape - non-detectable tape
- WSA PS 318 Marking Tape, Detectable
- WSA PS 319 Marking Tape, Non-Detectable

AUTHORISED ITEMS for DUAL WATER SUPPLY SYSTEMS

INDEX

Extension Pipe

Flange/Flange with Thrust Ring & 80mm Flanged Fire Plug Offtake - MSCL.....	10
Flange/Socket with Puddle Flange - Ductile Iron.....	9
Flange/Spigot with Puddle Flange - Ductile Iron.....	9

Fittings

Ductile Iron.....	6
Polyethylene-Electrofusion.....	8
Polyethylene-Mechanical.....	7

Flanged Offtakes

.....	12
-------	----

Jointing Kit

.....	20
-------	----

Multi Fit Couplings

.....	11
-------	----

Pipes

Ductile Iron Cement Lined Pipe (DICL).....	2
Polyethylene pipe for Recycled Water.....	4
PVC Pressure Pipe for Recycled Water.....	1
Steel Cement Lined Pipes (SCL).....	3

Signs and Markers

.....	25
-------	----

Street Box Assembly

Heavy Duty.....	24
Lightweight.....	23

Tape - Underground Warning

.....	26
-------	----

Under Pressure Tapping Service

.....	5
-------	---

Valves

Air Release.....	18
Butterfly.....	15
Hydrant - Air Release.....	17
Hydraulic Operated Control.....	19
Hydraulic Operated Sleeve.....	19
Non Return.....	16
Resilient Seat Gate - Double Flange.....	13
Resilient Seat Gate – with PE Pipe Connection Ends.....	14
Spindle Extension.....	22