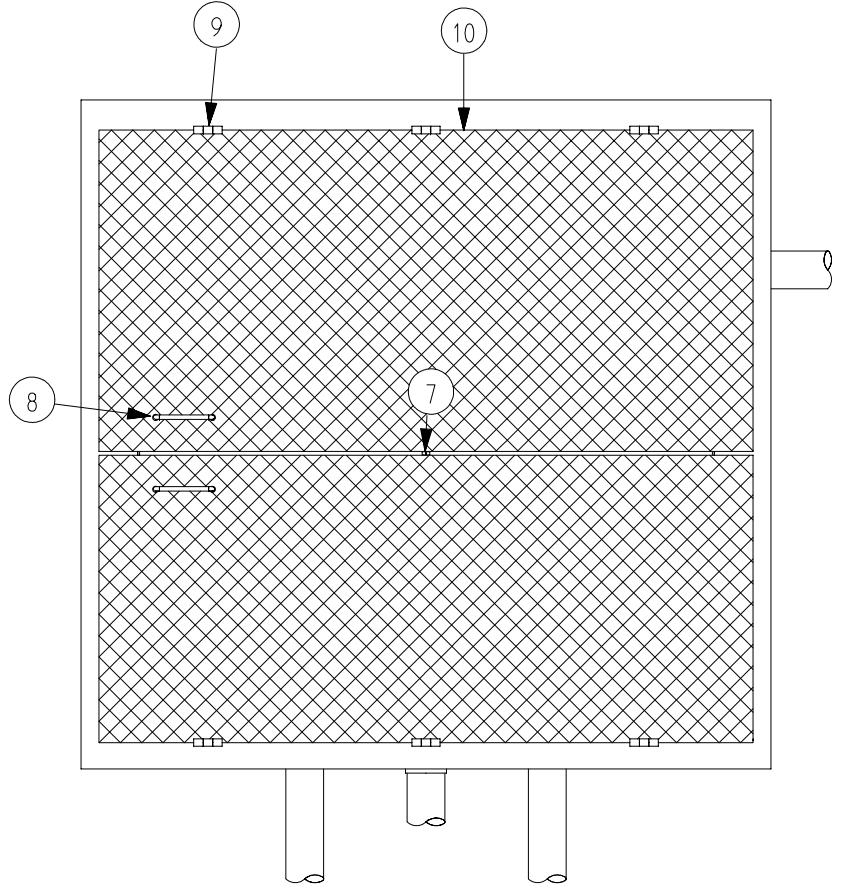


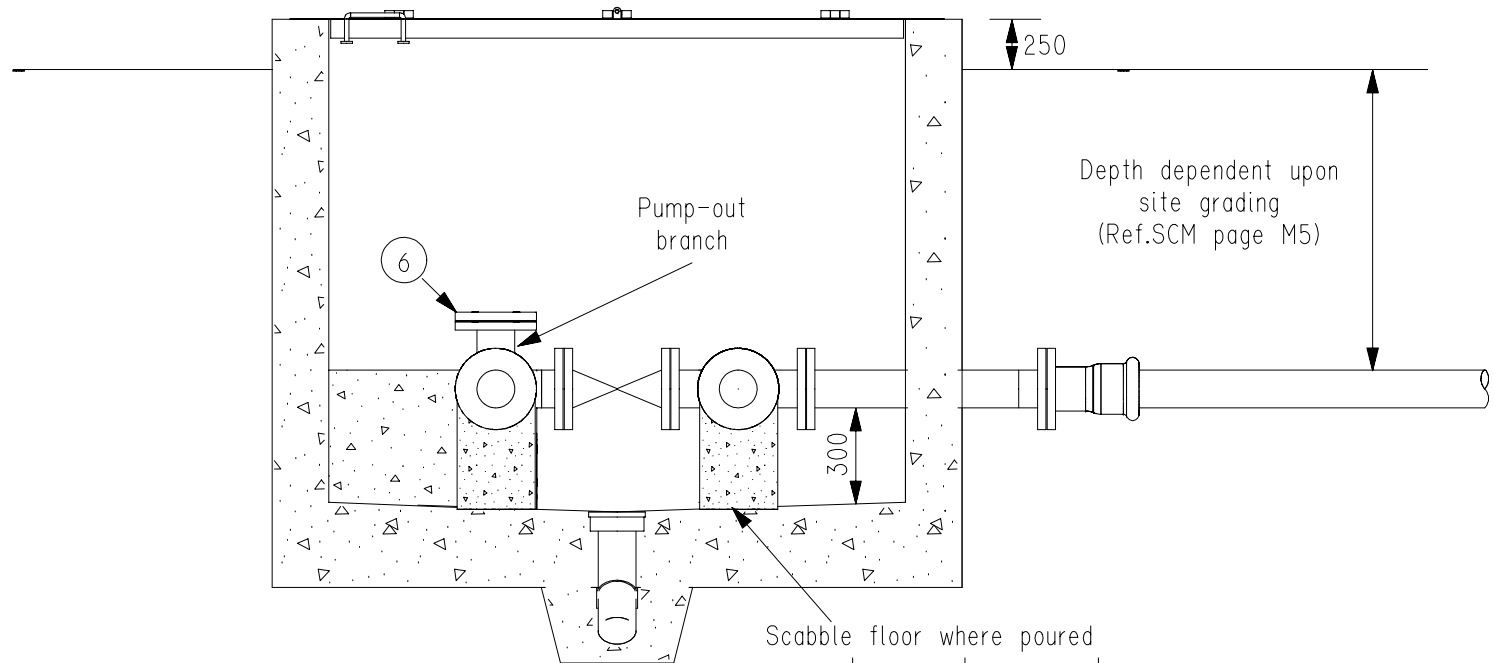
VALVE CHAMBER LEGEND

ITEM	DESCRIPTION
1	Check Valve
2	Concrete support or similar
3	Gate Valve
4	Tee
5	90° Bend
6	Blank flange
7	Locking Tab (for Pad Lock)
8	Lid Handle
9	Hinge (Stainless steel with fixed pin)
10	5mm Aluminum Chequer Plate
11	Drain with grate
12	Poured Concrete Thrust Block

Pipework:-  
 \* Pressure rating of pipework, valves, fittings etc. to be designed for each specific site. (Min. rating of 90m. head)  
 \* Pipework can be either CI, MSCL or MDPE



TYPICAL COVER ARRANGEMENT



SECTION A-A

- NOTES:-
- PERSONNEL ACCESS  
Access will be via a portable ladder. For chambers between 2 and 3 metres internal depth, additional floor space shall be provided to accommodate the greater inclination of a longer portable ladder, and also provide adequate space for safe entry and exit. For chambers exceeding 3 metres internal depth, the Superintendent's Representative shall determine personnel access requirements.
  - CLEARANCES as shown shall be 250 minimum.
  - PIPEWORK PENETRATIONS shall be either:-  
 \* formed for poured insitu structures or  
 \* cored using a diamond tipped cutter for existing or precast structures.
  - Concrete poured insitu shall be Grade N32 in accordance with AS 1379.
  - RESTRAINT OF PIPEWORK All pipework and fittings shall be restrained to contain hydraulic forces (operational and shut-down forces) using fixed supports, or thrust blocks (as shown) and/or thrust collars set into the walls.
  - Refer to SCM page M2 for details of:-  
 \* GROUNDWATER CONTROL  
 \* PREPARATION OF FLOOR OF EXCAVATIONS  
 \* FLOTATION  
 \* EXCAVATION SUPPORT  
 \* BACKFILL AROUND VALVE CHAMBER
  - CORROSION PROTECTION OF PIPEWORK - Refer SCM page M4 for details.

Only "AUTHORISED" items shall be used in the Sewer System.

Chg	Amendment - UPDATED 7-6-96	Des	JIS	
Drn		Drn	CLS	
Ckd		Exm		
Unit Ldr.		Unit Ldr.		

R.M.Jones  
Executive Manager 14 / 6 / 96  
ENGINEERING GROUP

**SOUTH AUSTRALIAN WATER CORPORATION**

**SEWER CONSTRUCTION MANUAL PAGE M13  
STANDARD SUBMERSIBLE SEWAGE PUMPING STN.  
TYPICAL ARRANGEMENT FOR VALVE CHAMBER  
(NON-TRAFFICABLE)**

Not to Scale

© This drawing is the property of the South Australian Water Corporation and shall not be copied without permission.