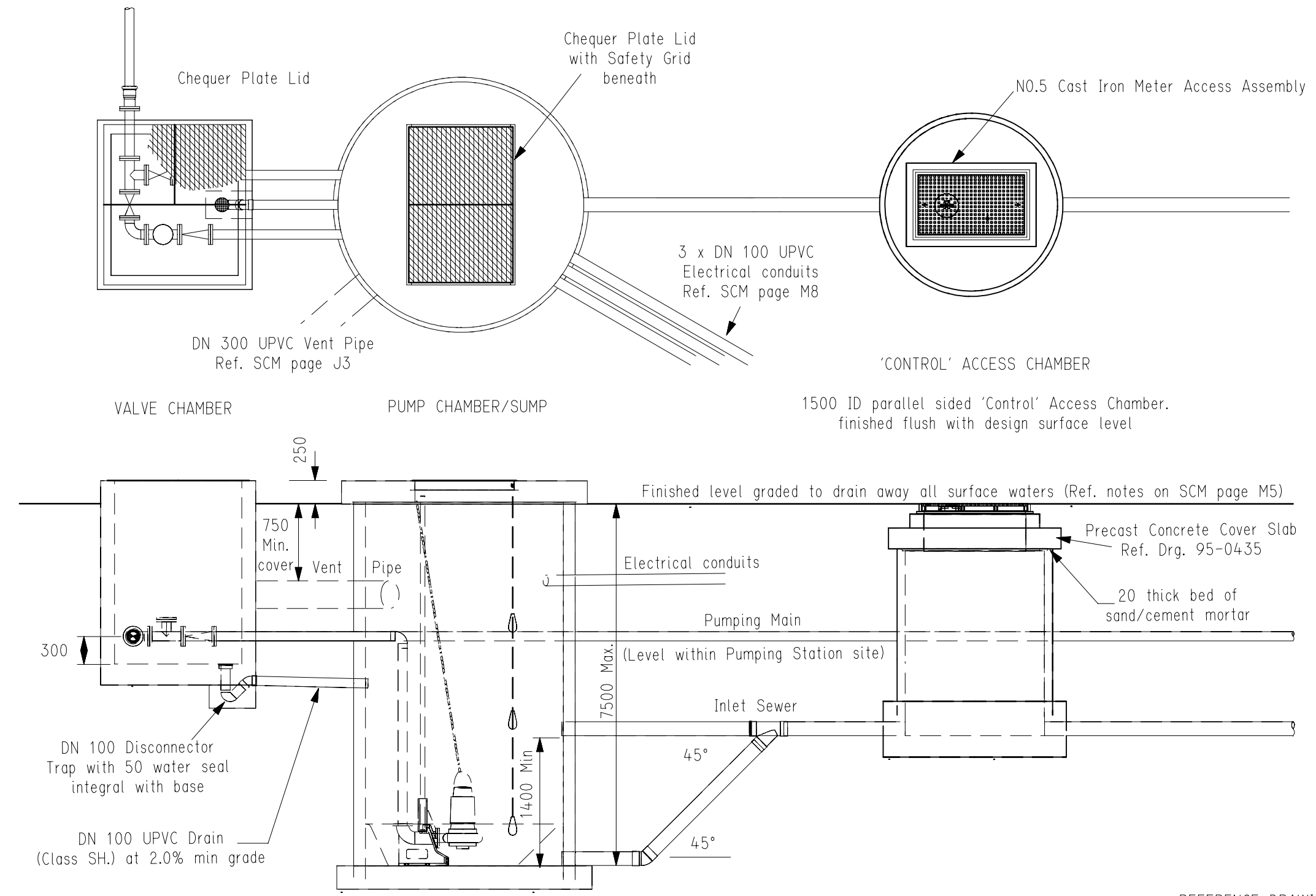


94-0163-07

ISSUED 6 Jan 97



PUMP CHAMBER/SUMP

Precast concrete proprietary brands of Pump Chamber/Sump can be either 1800 ID or 2100 ID depending upon sewage inflows. SA WATER shall determine the diameter for each specific site. Pump Chamber/Sumps shall be installed complete with covers, all electro-mechanical plant and equipment, pump bases, guide rails, pipework, liquid level control mechanisms, lifting chains and all ancillary items, in readiness for commissioning.

VALVE CHAMBER

Precast concrete proprietary brands of Valve Chamber can be installed. Pipework sizes will depend upon sewage inflows. SA WATER shall determine the pipework diameter. Valve Chambers shall be installed complete with covers, all pipework, valves, fittings and supports, in readiness for commissioning.

Only "AUTHORISED" items shall be used in the Sewer System.

REFERENCE DRAWINGS:

- SCM page M2 for:-
- 1. Earthworks and Paving Requirements for Pumping Station Sites and Access Roads
- 2. Excavation for Sump, Valve Chamber and Control Manhole
- 3. Installation of Pumping Station Sump
- 4. Backfill
- 5. Flotation

NOTE:
Specialist Geotechnical requirements may apply depending on the actual site and soil conditions and ground water level.

DB 94-0163 Plot 03

Chg	Amendment - UPDATED 4-6-96	Des	JIS	R.M.Jones Executive Manager 14 / 6 / 96 ENGINEERING GROUP
Drn		Drn	CLS	
Ckd		Exm		
Unit Ldr.		Unit Ldr.		

SOUTH AUSTRALIAN WATER CORPORATION

**SEWER CONSTRUCTION MANUAL PAGE M7
STANDARD SUBMERSIBLE SEWAGE PUMPING STN
PLAN AND SECTION**

Not to Scale

© This drawing is the property of the South Australian Water Corporation and shall not be copied without permission.

94-0163-07