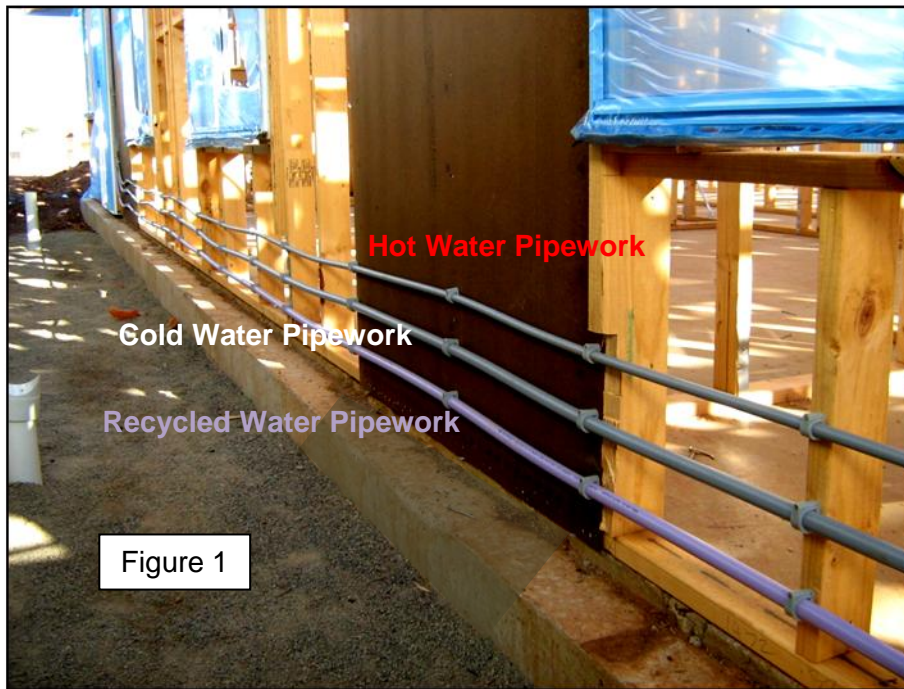


Plumbing Solutions – edition 14

Recycled Water First Fix - In Wall

Non – Drinking Water Services, Section 9 of AS/NZS 3500.1 Water Services – Acceptable Solutions specifies the requirements for the design, installation and maintenance requirements for recycled water, from the point of supply to the point of discharge. Recycled water is not for human consumption.

Recycled water services shall be installed so that the drinking water cannot be contaminated and that there is compliant separation between drinking and non-drinking services (Figure 1).



AS/NZS 3500.1 Water Services

9.3 Cross – Connection Control

Non-drinking water installations shall be designed, installed and maintained to prevent a cross-connection with drinking water supply. Where a property is served by a non-drinking water supply, the following shall apply:

- (a) A backflow prevention device for the degree of hazard and sized to suit the water service, shall be fitted at the meter (or at the boundary when a meter is not installed) on the drinking water supply.
- (b) There shall be no cross-connection between any drinking or non-drinking water services.

9.4 Materials and Products

Pipework and products used in the installation of non drinking water services shall comply with Section 2.

Section 2.4.3 Plastics pipes and fittings

Plastics pipes and fittings shall comply with the following requirements:

- (a) Where plastics pipes and fittings are subject to direct sunlight, they shall be installed in accordance with the specific product installation Standard.
- (b) Plastics pipes and fittings shall not be used to support valves, meters or associated pipes and fittings.

9.5.1 Installation Requirements

Installation shall be in accordance with the requirements for drinking water (see Section 3 and Section 5).

9.5.2 Non-Drinking Water Services and Outlets

9.5.2.1 Service Pipes

All pipes shall be identified by a purple colour in accordance with AS 2700 (NZS 7702) being no darker than P24 Jacaranda or P12 Purple and no lighter than P23 Lilac.

Where pipes are not integrally coloured purple, identification may be achieved by means of close fitting durable purple coloured sleeving, netting or spirally wrapped tape.

Note: Where copper pipes are used to supply recycled water, they are required to be sheathed (or painted) purple or lilac, as above and be clearly identified, at one metre intervals, with the following statement in accordance with AS 1345:

RECYCLED OR RECLAIMED WATER — DO NOT DRINK

9.5.3 Proximity to other services

- (a) Above-ground installations of non-drinking water services shall not be installed within 100 mm of any parallel drinking water service, except when installed in pipe duct or structurally separated.



If you have any questions about Recycled Water In-Wall installations, or the AS/NZS 3500 Plumbing and Drainage Standards or alternatively, if you would like copies of this or various editions of Plumbing Solutions, please contact Plumbooking on (08) 7424 1360 or email plumbooking@sawater.com.au

We welcome your feedback. If you have any comments about Plumbing Solutions, or wish to suggest some topics to be covered in future editions please send us an email to plumbooking@sawater.com.au