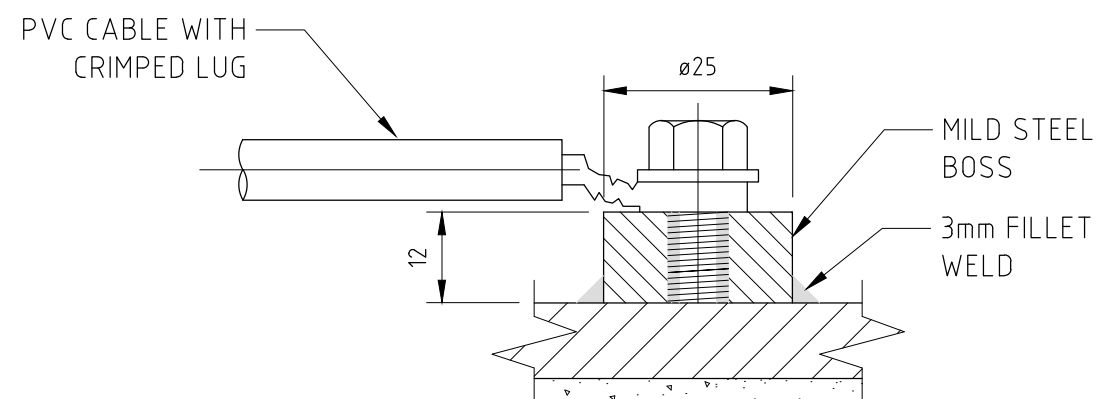


TEST POINT PIPE CONNECTION
DETAIL A
SCALE 1:1





ALTERNATIVE TEST POINT PIPE CONNECTION
DETAIL B
(TO AVOID DAMAGE DURING INSTALLATION)
SCALE 1:1

PROCEDURE FOR INSTALLING TEST POINTS ON MSCL BELOW GROUND MAINS

1. REMOVE PIPE COATING FROM AN AREA ON TOP OF PIPE APPROX. Ø40 IF IT IS A NON-SINTAKOTE PIPE, FOLLOW PROCEDURE FOR REMOVAL OF ASBESTOS.
2. CLEAN PIPE TO BRIGHT METAL IN CENTRE WHERE SET SCREW IS TO BE WELDED.
3. WELD COMPLETELY HEAD OF SET SCREW TO PIPE.
4. PLACE CABLE LUG ON SET SCREW WITH MILD STEEL WASHERS ON EACH SIDE OF LUG AND TIGHTEN NUT TO GIVE GOOD ELECTRICAL CONNECTION.
5. APPLY CABLE CONNECTION COATING.
6. MARK CABLE LOCATION PRIOR TO INSTALLING POST AND JUNCTION BOX OR STREET BOX.
7. COAT WITH DENSO MULTI PURPOSE PRIMER. COVER WITH DENSO MASTIC AND THEN ENCASE WITH PIECES OF DENSO TAPE AND DENSO MP/H OVERWRAP. TAPE IN ACCORDANCE WITH TS-0402. APPROVED EQUIVALENT FOR DENSO TAPE MAY BE USED.
8. SUFFICIENT SLACK SHOULD BE LEFT IN THE BURIED CABLES TO PREVENT DAMAGE DURING BACKFILLING.

REFERENCE DRAWINGS

SHEET 08 - TEST POINT CONNECTIONS
SHEET 17 - BOND CABLE ARRANGEMENT ON BELOW GROUND
VALVES AND MSCL PIPELINES

REVISION PANEL					DESIGN PANEL			<div><div></div><div>This drawing is the property of the SOUTH AUSTRALIAN WATER CORPORATION and shall not be copied or modified in part or in whole without authorization.</div></div>		SA WATER STANDARD DRAWING		A3		TOTAL SHEETS:		1.0							
REV	DATE	DRN	DETAILS	APR	CURRENT REV 03/06/22	DESIGNED: 03/06/2022	AUTHORISED:			SHT SIZE	PROJECT No: X00002	REVISION											
					AUTHORISED:	R. SALAZAR ROMERO	KINGSLEY BROWN																
					SIGNATURE:	DRAWN: 03/06/2022	SIGNATURE:																
						C. DOUGALL																	
						REVIEWED: 03/06/2022																	
						KINGSLEY BROWN																	
1.0	03/06/22	CD	ISSUED FOR USE	RSR																			
CURRENT REV CONTRACTOR:					CURRENT REV PROJECT:					CONTRACTOR:													
										SA WATER STANDARD DRAWING		FOR TEST POINTS		CATHODIC PROTECTION		MAXIMO ID:		SUPERSEDES:		DRAWING NUMBER		STD-04-00001_09	