



SA Water House Visitor Guide

Angas Street entrance



Government of
South Australia

Welcome to SA Water House

We understand that it can be helpful to plan your visit to SA Water House, in the Adelaide CBD. This guide will make your visit easier.

This guide shows people visiting SA Water House:

- how to enter **from the Angas Street entrance**
- where the public spaces in the building are
- how you can access each area.

We acknowledge that SA Water House is on Kurna land.



Acknowledgement of Country

SA Water acknowledges the Traditional Owners of Country throughout South Australia. We recognise their unique and continuing connection to lands and waters. We pay respect to Elders past and present and extend that respect to all Aboriginal and Torres Strait Islander peoples visiting or living in South Australia.

Ground floor

Accessibility features offered on the ground floor of SA Water House when you come in from Angas Street, through the accessible automatic doors (1).

SA Water House has a rectangle ground floor that is spacious and usually not very busy.



Ground floor

- 1** Entrance via Angas Street through automatic sliding door.
- 2** Customer service front desk, located closer to the Angas Street entrance and available from Monday to Friday, 8:30am to 4:30pm.
- 3** Concierge and security desk, located in the centre of the hallway between both entrances. The team is available 24/7.
- 4** Comfortable sitting area for public use.
- 5** Cafe with seating and tables for public use. This area gets noisy between 12pm and 2pm.
- 6** Stairs leading to the Learning Centre on Level 1.
- 7** Accessible toilet.
- 8** Lift access to the Learning Centre on Level 1.
- 9** Accessibility button that will slow down the revolving door for exit onto Wakefield Street.
- 10** Revolving door, if you wish to exit the building onto Wakefield Street.

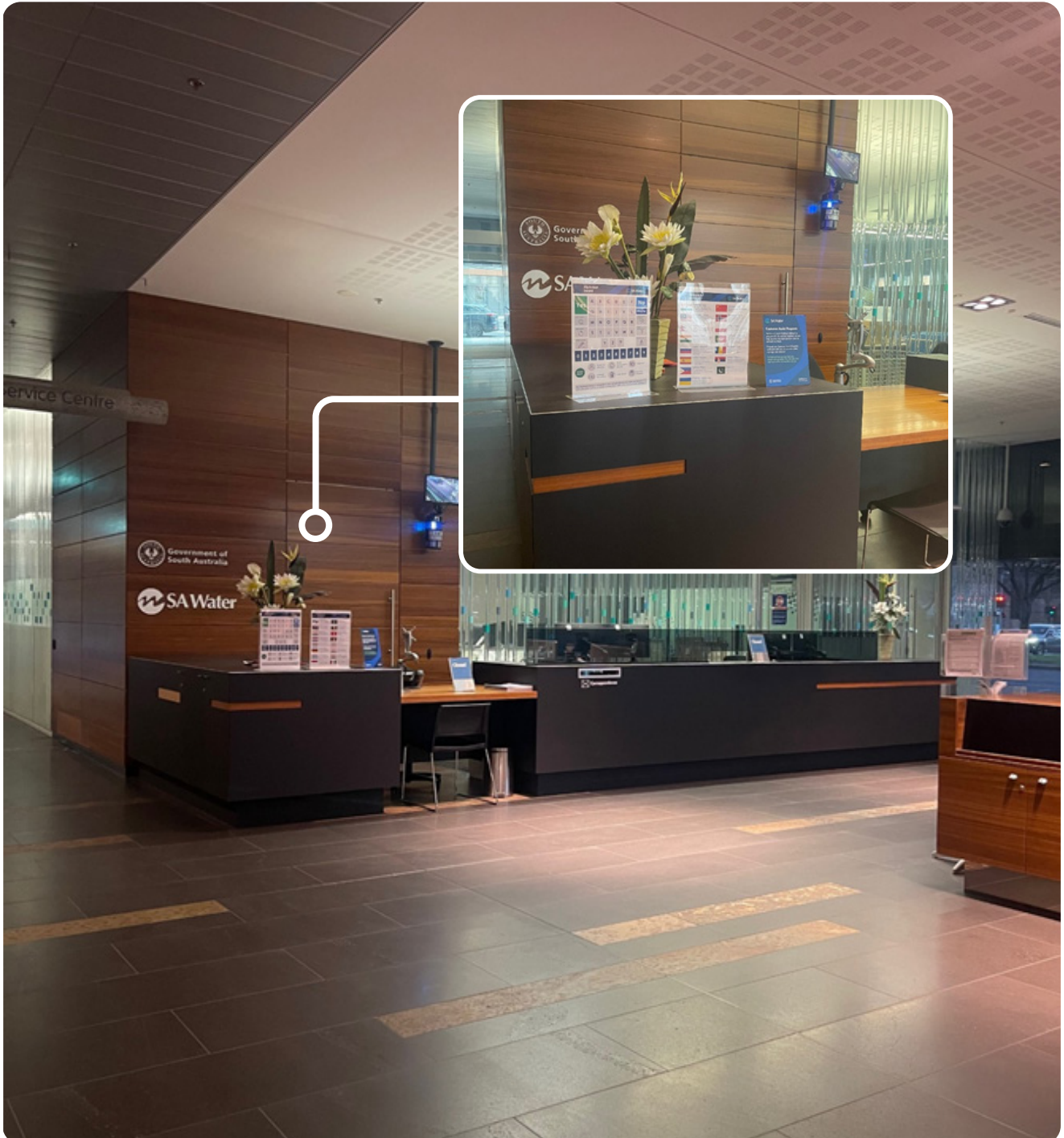
If you face SA Water House from the Victoria Square fountain, the Angas Street entrance will be on your right.



The southern entrance on Angas Street has two automatic sliding doors that can be used for entering and exiting.



You will approach the **front counter** on your left as you enter the building along the hallway. Our customer service front counter is staffed Monday to Friday between 8:30am and 4:30pm. There is public seating available.



The concierge and security desks are on the right wall as you enter from the automatic doors. There will always be at least two security guards on duty. If you require assistance, they will be happy to help you.



The cafe is in the centre of the ground floor and is open from 7am to 4pm, Monday to Friday. It has plenty of seating for the public.



There are **36 stairs** to the Learning Centre on level 1. You do not need a visitor pass to visit the Learning Centre.



There is one **accessible toilet** to the right of the stairs as you move towards the other side of the building.



There is **lift access** to the Learning Centre on level 1. It is located to your right, as you move past the stairs and accessible toilet entrance.

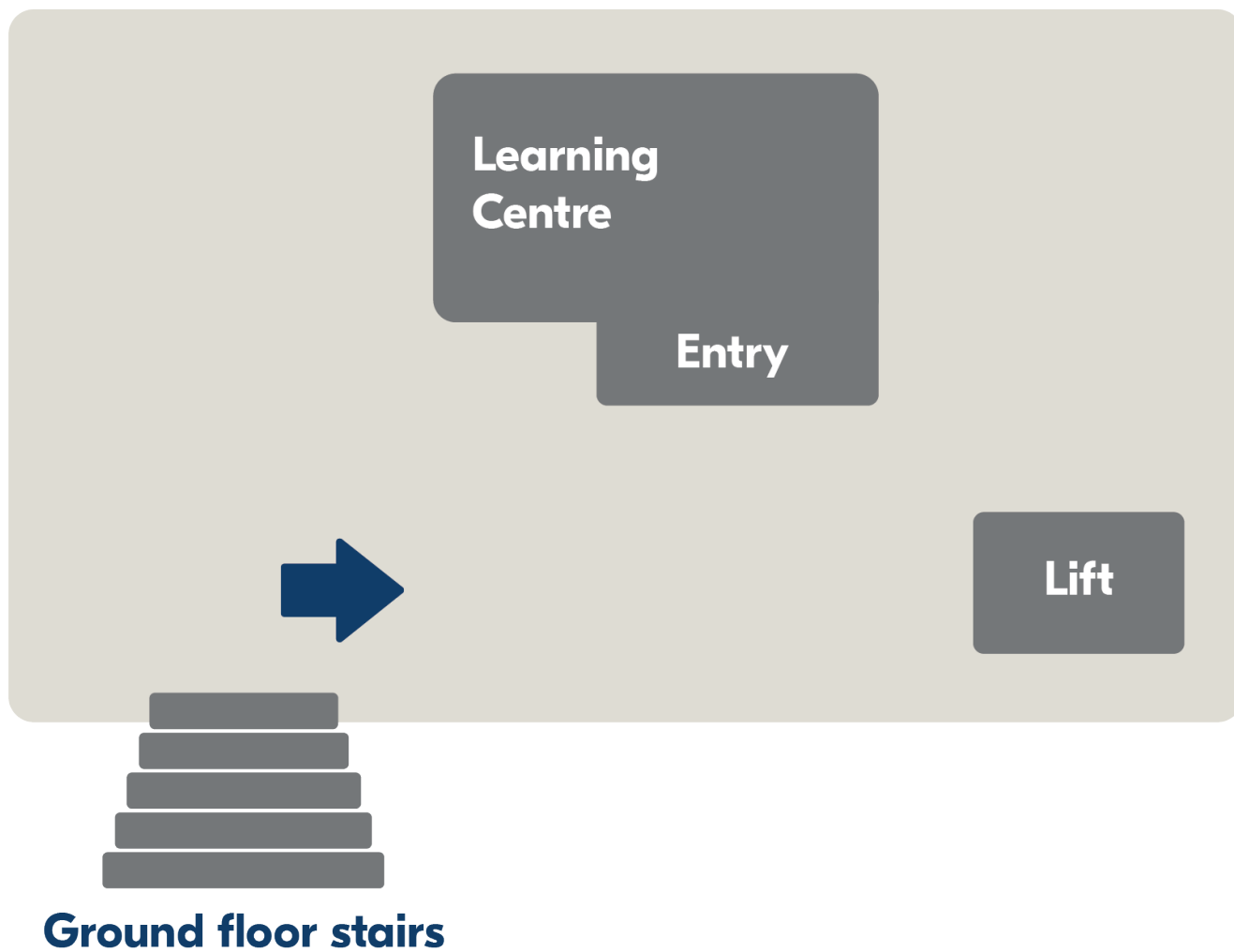


You have the option to exit the building onto Wakefield Street through **revolving doors**. There is a round **accessibility button** to press that slows down the revolving door. The button is located on the left side of the door frame and about 1 metre above ground.



Level 1

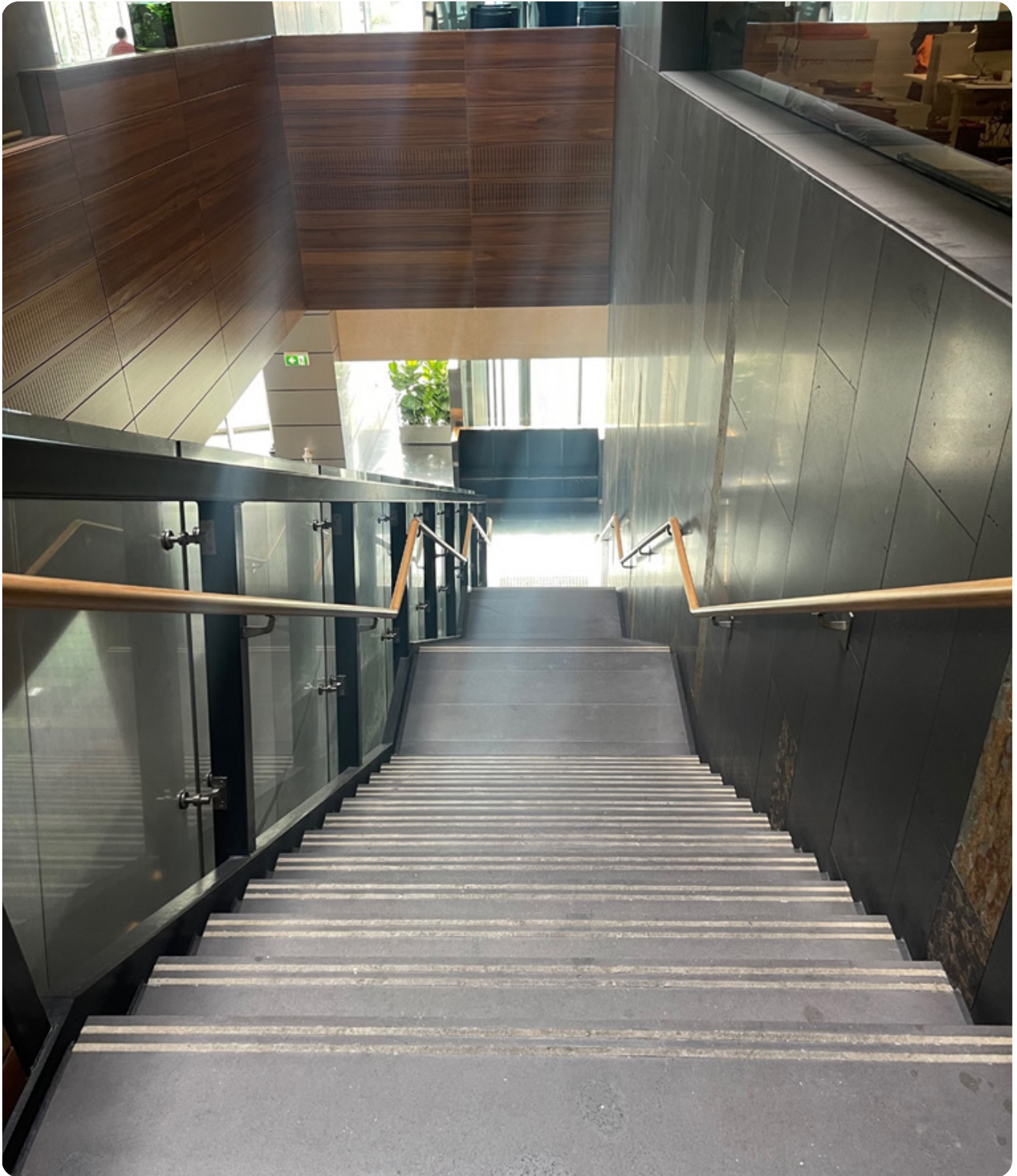
Accessibility features offered on level 1 of SA Water House. Follow the guide below to learn about the two exists from the learning centre.



You can use **the lift** to move from level 1 back to the ground floor. You need to turn left when you are leaving the Learning Centre room.



You can take **the stairs** to move from level 1 back to the ground floor. There are 36 stairs. You need to turn right when you are leaving the Learning Centre room.



We hope this guide makes your visit to SA Water House easier.

If you have feedback to help us improve our accessibility, please contact us in the way that best suits you:



Email us at accessibility@sawater.com.au.



Call 1300 SA WATER (1300 729 283).



In person at SA Water House
(8:30am to 5:00pm, Monday to Friday).



Contact us via web chat
(8:30am to 5:00pm, Monday to Friday)

Thank you.